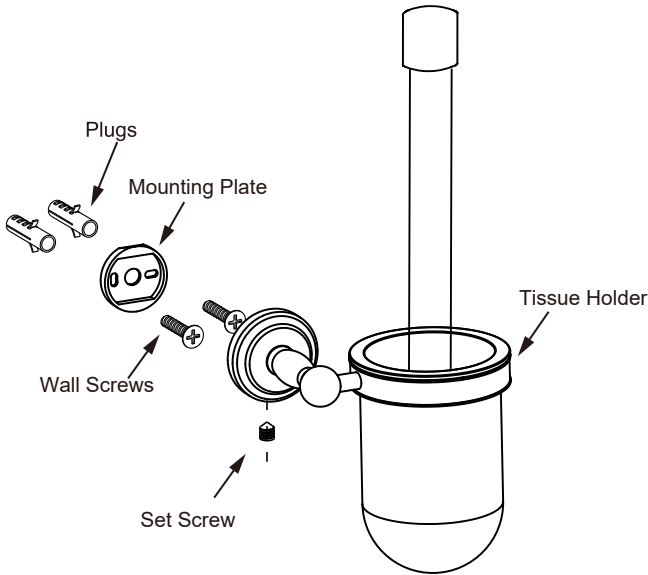


FLORENCE COLLECTION

TOILET BRUSH SET

322610



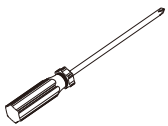
Tools required for installation



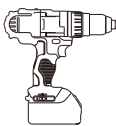
Level



Pencil



Screwdriver

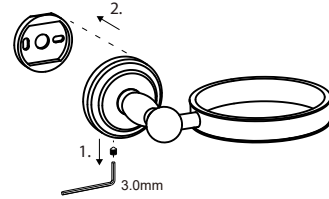


Drill



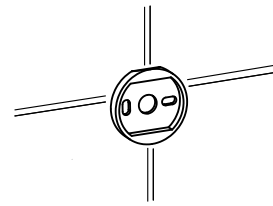
Hammer

Step 1



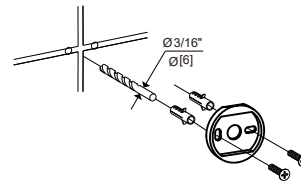
Loosen the set screw on the accessory and remove the backing plate. Position the accessory against the wall and mark outline with pencil.

Step 2



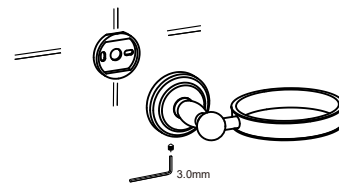
Position the backing plate flat side down on the wall and mark holes with pencil.

Step 3



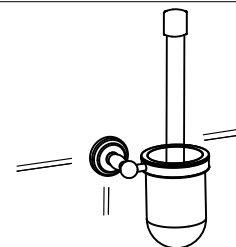
Predrill 3/16" holes on the wall to fit wall plugs. Insert wall plugs into the wall. Position backing plate flat side down over the plugs and install screws.

Step 4



Slide the accessory onto the backing plate and tighten the set screw using Allen key provided.

Step 5



Put the glass toilet brush set into the holder.